

2006 looking like a hot political year locally

The new year cheers haven't even begun, but the political season for 2006 is beginning to take shape already.

Clark County Clerk **Jo Anne McBride**, a perennial Democratic winner, today announced she will retire from elective office at the end of next year. McBride, who will have spent more than a quarter of a century in the Clerk's office, says it's time to retire. "I want to spend some time with children," she says, "volunteering a couple of days a week in a hospital nursery."

On December 21, Republican **Baine Wilson**, who works for McBride as the Superior Court Collection Unit coordinator, announced she is a candidate for that office in 2006.

Today, **Bill Jameson**, who is a program coordinator for the Department of Assessment and GIS, announced he will be a Republican candidate for Clark County Assessor, a post that has been held by Democrat **Linda Franklin** since the 2002 election. Prior to that, Franklin had held the job as chief deputy for 24 years.

On learning of the Republican candidate's intentions today, Franklin said yes, she will be a candidate for re-election.

Jameson has been with the Assessor's office for the past 11 years, as an appraiser, office manager and program manager. Jameson is a graduate of Pacific University. He has been active in Little League, Babe Ruth Baseball and scouting.

Franklin, a graduate of Washington State University, holds a masters degree in administration from the University of Oregon. She is also an accredited appraiser. Franklin has been active in community affairs, including a long-time association with the Clark County League of Women Voters.

Todd Falduti named manager for Westfield Vancouver

Todd Falduti has been appointed general manager of Westfield Vancouver, taking over the reins of southern Washington's largest shopping mall in January 2006.

Falduti has been with Westfield for the past five years, serving as senior operations manager for the Los Angeles region, and as the assistant manager at Westfield Parkway in San Diego and also at Westfield Valley Fair in San Jose. His background includes leading construction teams, mall operations, and contract negotiations.

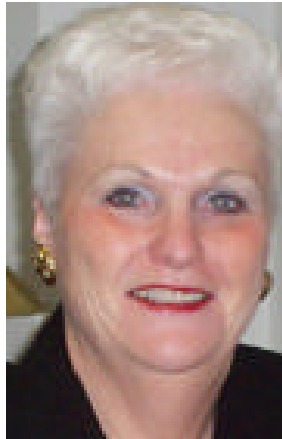
The Westfield Group is an Australian-based company with interests in 129 shopping centers in Australia, New Zealand, the United Kingdom and the United States. The U.S. group consists of 68 shopping centers.

Twyla Barnes picked to chair Southwest Washington Medical Center board

Twyla Barnes, superintendent of Educational Service District 112, has been named chair of the Southwest Washington Medical Center board of trustees. She succeeds **John White**.

Barnes is active in civic and regional affairs in Vancouver and surrounding counties. She has served on boards of several organizations in addition to the Southwest Washington Medical Center, including the Vancouver National Historic Reserve Trust, Columbia River Economic Development Council, and Washington State University Advisory

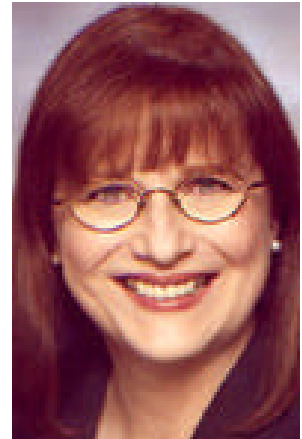
Board.



McBride retiring



Jameson running



Franklin running again



Todd Falduti

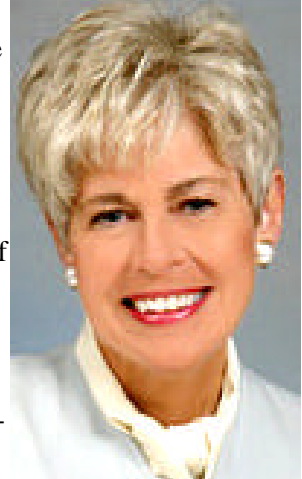
Barnes has been recognized as a Clark County Woman of Achievement. She chairs the Washington State Information Processing Cooperative Board. She is a member of the state Telecommunications Oversight and Policy Council. Nationally, Barnes served as president of the Association of Educational Service Agencies and as a special advisor to the U.S. Department of Education for the "No Child Left Behind" Act.

ESD 112 is a public education agency serving over 100,000 students in grades K-12 in the 30 school districts of southwest Washington.

A long-time champion of public education, Barnes's career includes three decades of both teaching and administrative positions in Montana, Alaska, and Washington. A graduate of the University of Montana, Barnes holds a masters degree in administration from the University of Alaska and earned her doctorate in educational administration from the University of Miami in Coral Gables.

The SWMC board of directors currently consists of sixteen directors who serve two-year terms with a maximum of six consecutive full terms.

SWMC is one of Clark County's largest employers. The medical center's 3,250 employees and 545 active medical staff members help support 32 different medical specialty services and programs, focused on cancer, heart, emergency, trauma, neuro-musculoskeletal, family birth, and primary care.



Twyla Barnes

Thursday headlines from at home and around the world

[Rosemere Neighborhood Association, others file for federal protection of underwater aquifer--Columbian, Jeffrey Mize](#)

[Greater Vancouver Chamber of Commerce backs all seven school levy proposals--Columbian, Howard Buck](#)

[Area pay matches national average--Columbian, Jonathan Nelson](#)

[Coming deluge to add to flooding fears--KATU](#)

[Injustice of 1884 on state agenda for 2006--Seattle Times, Ralph Thomas](#)

[Kurds quietly ready for civil war--Seattle Times, Knight Ridder, Tom Lasseter](#)

[Bush team rethinks its plan for recovery--Washington Post, Peter Baker and Jim VandeHei](#)

Thursday on the air

Tree Planting Demonstration (12/3)—4:30 p.m. CVTV

Holiday Bowl: Oregon vs. Oklahoma (live)—5 p.m. ESPN, KXL, KFX

Emerging Trends In Real Estate (11/30)—5:03 p.m. CVTV

Washington's New Smoking Regulations—6:30 p.m. CVTV

Kamloops at Portland Winter Hawks (live)—7 p.m. KCMD

Night of 1000 Stars Awards (12/16)—8 p.m. CVTV

Community Inspiration Celebration (12/20)—9:30 p.m. CVTV

Clark County Commissioners (12/13)—11 p.m. CVTV

Town Tabloids and the weather

Pat Bowden faster than a speeding bullet. ☞ **Chance McCulloch** entertaining small throng. ☞ **Warren Cook** taking aim on 2006. ☞ **Christine Martini** updating. ☞ **Greg Flakus** turning in stellar report. ☞ **Maegan Vidal** pointing out correct time. ☞ **Terri Cochran** reporting successful sale. ☞ **Thursday**, rain may taper off, 50. **Friday**, showers, 51. **Saturday**, year ends with a few light showers, 48.