

Our Business Cash Management Tools Put Everything in Order

ReadyRemote™ | Positive Pay | Online ACH Services | Sweep Accounts | LockBox | Courier | Merchant Services



First Independent
Ready When You Are.™

Member FDIC

Bridges over the Tacoma narrows one of the sights Amtrak offers on Seattle run

There is a lot to see and a lot you can't see taking the Amtrak train to Seattle. This is because of the trees, Young trees seem to be growing everywhere.

Vancouver Lake is only briefly visible. Whatever interesting views might be seen between Ridgefield and Kelso are also obscured by trees. What one does not see at all is any clear-cut timber patches. Even these are growing over, mostly with Douglas fir trees.

For just over \$200, a couple can get round-trip business-class tickets on the Cascade Limited, Vancouver to Seattle, and see spectacular views of Mount St. Helens, Mount Rainier, Puget Sound, glide beneath the majestic Tacoma Narrows bridges, see Tacoma's beautiful old train station (but not stop there; the station is a museum.) The Tacoma railroad station is north of the Tacoma Dome, and, like all but Seattle's King Street Station, Vancouver's antiquated station and Olympia's spiffy new Amtrak station, the other stops are mostly out-of-doors parking spaces for travelers.

The trip between Vancouver and Seattle is roughly three and a half hours each way—roughly because the rails—not clickity clackity—are not always joined just right to prevent lurching and screeching, but within a safe range, apparently.

What the travelers gets, however, is an adventurous trip, leaving at 12:30 p.m. in the afternoon in plenty of time to get to an evening Seattle Mariners game in Safeco Field, and for following day to get in an afternoon game before returning to Vancouver on the 5:30 train.

No driving, no parking, no \$4.50 per gallon gasoline and, in the case of the Mariners, no hits, no runs, no errors. For further information, call Amtrak, 694-7307.

Modeling school adds two instructors

Immortelle Modeling and Acting Agency has hired **Crystal Kaleta**, a graduate of Portland Community College, who has eight years of modeling experience, as an instructor for the school and agency.

Melanie Keller, a graduate of the University of Washington who has been with Broadway Bound Children's Theatre in Seattle as a drama instructor.

The Vancouver-based modeling school, acting school and agency, was established in 1998.

The company specializes in programs for students between 7 and 17, according to agency founder and director **Alaine Firmin**.

Brigade encampment recaptures Vancouver of early 19th century

Between 1825 and 1848, the end of the northwest fur trapping season was celebrated at the Hudson's Bay Company with what became known as the brigade encampment—the return of trappers to the company's Fort Vancouver area.

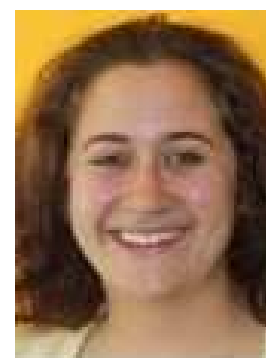
This several-day holiday-like occasion is being recreated between 10 a.m. and 5 p.m. Saturday, June 21, and



Tacoma Narrows bridges as seen through the window of Amtrak's Cascade Limited. Rail trip between Vancouver and Seattle offers much scenery, some of which is being obscured by rapidly growing canopy of new forest.



Crystal Kaleta



Melanie Keller

Sunday, June 22, just outside the Fort Vancouver E 5th Street.

There is no charge for visitors at the encampment, although an admission charge is in effect for entrance into the fort area. For further information, call **816-6243**.

Gifford Pinchot celebrations begin

The Gifford Pinchot National Forest, encompassing most federal forest land in Clark, Skamania and Cowlitz Counties, and including Mount St. Helens, will be 100 years old July 1. One of the first observances of the centennial is Monday, June 23, in the Mount St. Helens Volcanic Monument in Chelatchie Prairie.

At 11:30 a.m. **Gerald Williams**, retired U.S. Forest Service historian, will discuss the life and legacy of Gifford Pinchot, the first chief of the U.S. Forest Service. The office will be open to the public from 8 a.m. to 5 p.m., according to forest service spokesperson **Roger Peterson**.

Maps are available, and memorabilia will be available for sale. For further information go to <http://www.fs.fed.us/gpnf/research/heritage/CentEvents.shtml>.

Calendar

The Vancouver City Council meets in a workshop session at 4 pm. today. <> The Vancouver City Council meets in regular session at 7 p.m. this evening. The council is considering final approval of a 500-acre-plus mostly rural area northeast of the city. Property owners within the area petitioned for the annexation. <> Clark Public Utilities' commissioners meet in regular session at 9 a.m. Tuesday, June 17. <> The Southwest Washington Blood Center is holding a blood drive from 10 a.m. to 4 p.m. Tuesday, June 17, near the cafeteria at Washington State University Vancouver.

Monday on the air

Vancouver City Council Workshop (live)—4 p.m. CVTV

Northwest Indian News—6:30 p.m. CVTV

Vancouver City Council (live)—7 p.m. CVTV

Florida at Seattle Mariners (live)—7 p.m. FSN, KFX

Portland Beavers at Fresno (live)—7 p.m. KKAD

Winning Ways to Run for Office (5/29)—11 p.m. CVTV

Town Tabloids and the Weather

Molly and **Maggie Knight** frolicking with friends. <> **George Welsh** practically in the spotlight. <> **Terry Murphy** doing Margaret Bourke White trick. <> **Barbara Kerr** proving a little extra is just right. <> **Jack Hardy** making news. <> **Monday**, sunny, hazy, 49-72. **Tuesday**, partly cloudy, 49-72. **Wednesday**, partly cloudy, 52-72.